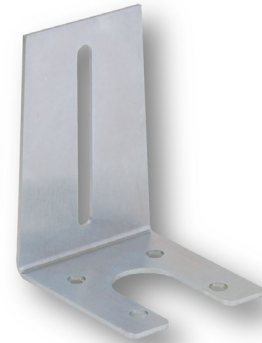


Product Highlights

To simplify the mounting process, Ai offers a line of camera brackets for positioning lights under or around the camera lens.

Most brackets are designed to be held in place by the same screw that secures the camera.



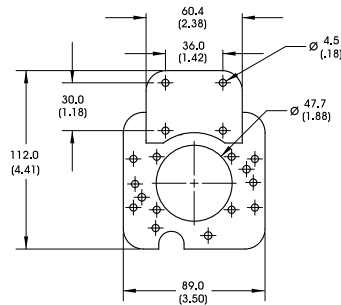
	LB101	LB102	LB103	LB104	LB105	LB106	LB107	LB108	LB109	LB110
DL2230	✓		✓		✓					✓
DL194	✓		✓	✓	✓		✓			✓
DL097				✓		✓				
RL121	✓									
RL127			✓							
RL1424	✓		✓		✓				✓	✓
RL4260	✓		✓	✓	✓			✓		✓
RL36120	✓		✓	✓	✓			✓		✓
RL5064	✓		✓	✓	✓			✓		✓
RL3536	✓		✓	✓	✓			✓		✓
RL113				✓						
RL169				✓						
RL1360				✓						
RL1660				✓						
RL3940	✓		✓	✓	✓			✓		✓
SL073		✓								

✓ Bracket is compatible with light

✓ Bracket is included with light

Mechanical Specifications

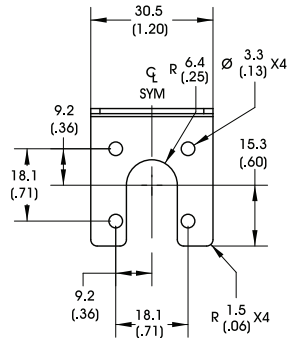
LB101



FOR USE WITH:
Cognex Series 5000 &
Matrox Cameras

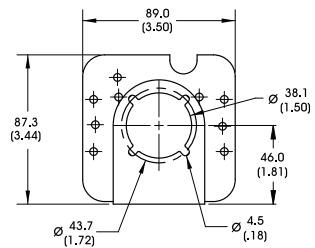
Ai Lights:
DL2230, DL194, RL121, RL1424, RL4260, RL36120,
RL5064, RL3536, RL3940

LB102



FOR USE WITH:
SL073

LB103

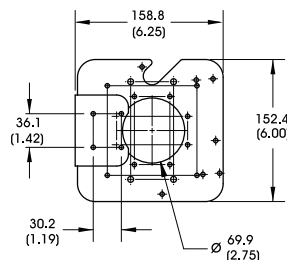


FOR USE WITH:
NI Cameras

Ai Lights:
DL2230, DL194, RL127,
RL1424, RL4260, RL36120, RL5064,
RL3536, RL3940

DIMENSIONS ARE IN MILLIMETERS (INCHES)

LB104

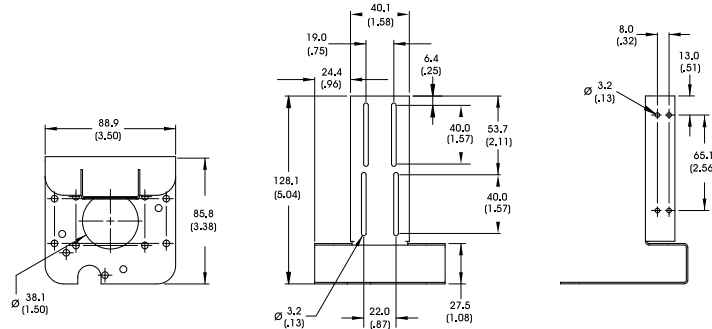


FOR USE WITH:
Cognex Series 5000
& Matrox Cameras

Ai Lights:
DL194, DL097, RL113, RL4260,
RL36120, RL5064, RL1360,
RL1660, RL3536, RL169, RL3940

Mechanical Specifications

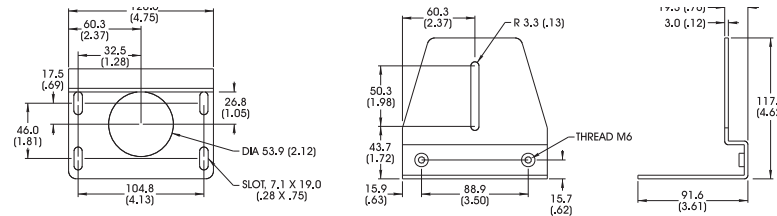
LB105



FOR USE WITH:
Cognex Micro Cameras

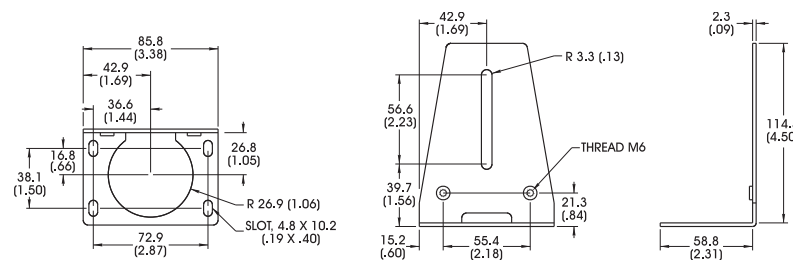
Ai Lights:
DL2230, DL194, RL1424, RL4260,
RL36120, RL5064, RL3536, RL3940

LB106



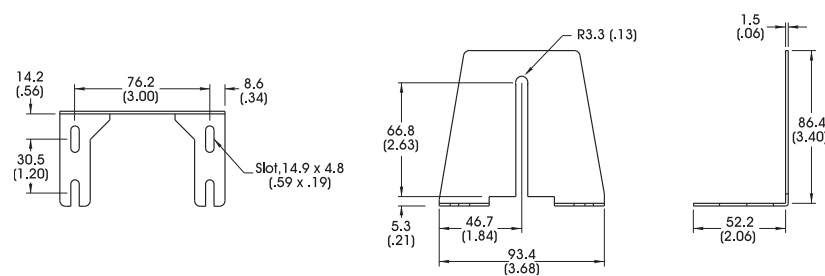
FOR USE WITH:
DL097

LB107



FOR USE WITH:
DL194

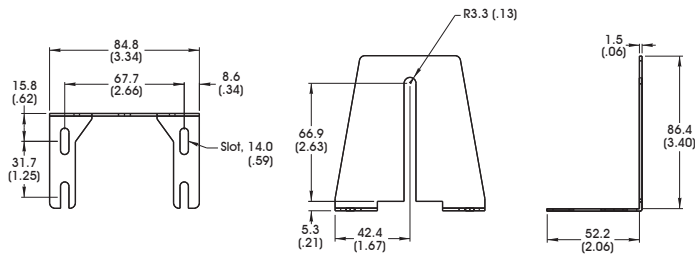
LB108



FOR USE WITH:
RL4260, RL36120, RL3536,
RL5064, RL3940

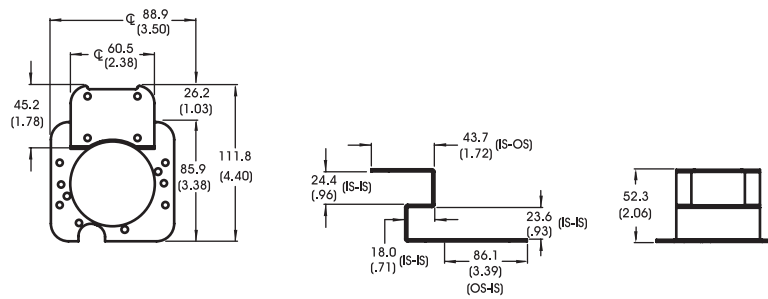
Mechanical Specifications

LB109



FOR USE WITH:
RL1424

LB110



FOR USE WITH:
NI 177X Series
DL2230, DL194, RL1424, RL4260,
RL36120, RL36120, RL5064, RL3536,
RL3940

Mounting Brackets

Part Number Key

Model	Extension
LB	XXX
LB	101
	102
	103
	104
	105
	106
	107
	108
	109
	110

Stock Product: *shipped next day*

- LB101 LB105 LB109
- LB102 LB106 LB110
- LB103 LB107
- LB104 LB108

Mounting Brackets

Warranty Information

Every Advanced illumination, Inc. (Ai) product is thoroughly inspected and tested before leaving the factory. Products are warranted to be free of defects in workmanship and materials for a period of two years from the original date of purchase. Should a defect develop during this period, please contact Ai Customer Service or your Ai distributor for a Return Merchandise Authorization (RMA), and return the complete product, freight prepaid, to Ai. If a defect is found, Ai will - at our discretion - repair or replace the product without charge. Ai claims no liability for any implied warranties, including "merchantability" and "fitness for a specific purpose."

Electromagnetic Compatibility

This product was tested and complies with the regulatory requirements and limits for electromagnetic compatibility (EMC) as stated in the product specifications. These requirements and limits are designed to provide reasonable protection against harmful interference only when the product is operated in its intended industrial electromagnetic environment. To minimize the potential for electromagnetic interference or unacceptable performance degradation, install and use this product in strict accordance with the instructions in the product documentation.

Customer Service

For information on existing orders, or to make an order adjustment, contact us Monday through Friday 8:00 am to 5:00 pm ET or send an email to orders@advill.com.

Company Information

Advanced Illumination

440 State Garage Road, Rochester VT. 05767

Phone: 802.767.3830

Fax: 802.767.3831

Email: info@advancedillumination.com

Web: advancedillumination.com

© 2015 Advanced Illumination Inc. All rights reserved